



LABELX®

Automatic labeller for medium and high speed applications

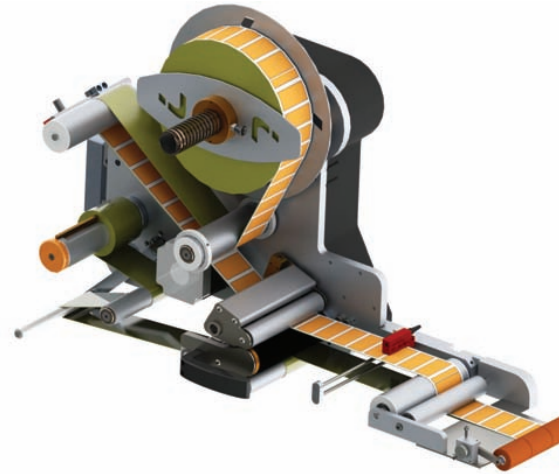
Standard features

<i>Electronic control</i>	ES with Touch Screen
<i>Max. label width</i>	140-250-350 mm
<i>Max. adjustable speed</i>	55(140)-35(250)-25(350)
<i>Motor</i>	Step by Step
<i>Roll holder dimension</i>	300 mm
<i>Driving unit</i>	Pull & Push
<i>Dispensing arm</i>	Adjustable 0-90°

Mechanical unwinder | Stop photocell | End of roll alarm | Encoder in-put | Offset and start delay adjustment | Automatic recovery of missing label | Applied label counter | Setting memorization

Accessories

Pre-end of labels roll alarm
Photostop for transparent labels
Start photocell
Oscillating roller applicator



LABELX® RM

Automatic labeller for high and highest speed applications

Standard features

<i>Electronic control</i>	ES with Touch Screen
<i>Max. label width</i>	140-250 mm
<i>Max. adjustable speed</i>	80(140)-50(250)
<i>Motor</i>	Double Step by Step
<i>Roll holder dimension</i>	300 mm
<i>Driving unit</i>	Pull & Push
<i>Dispensing arm</i>	Adjustable 0-90°

Mechanical unwinder | Motorized rewinder | Stop photocell | End of roll alarm | Encoder in-put | Offset and start delay adjustment | Automatic recovery of missing label | Applied label counter | Setting memorization

Accessories

Pre-end of labels roll alarm
Photostop for transparent labels
Start photocell
Oscillating roller applicator



LABELX® JR

Automatic labeller for low and medium speed applications

Standard features

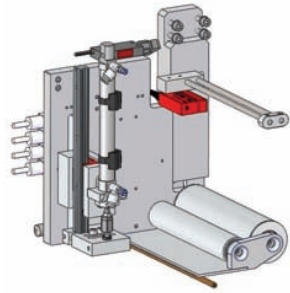
<i>Electronic control</i>	in separate box ER-EW
<i>Max. label width</i>	140-250 mm
<i>Max. adjustable speed</i>	30(140)-20(250)
<i>Motor</i>	Step by Step
<i>Roll holder dimension</i>	300 mm
<i>Driving unit</i>	Pull & Push
<i>Dispensing arm</i>	Adjustable 0-90°

Mechanical unwinder | Stop photocell | End of roll alarm | Encoder in-put (EW Electronic) | Offset and start delay adjustment | Automatic recovery of missing label | Applied label counter | Setting memorization (EW Electronic)

Accessories

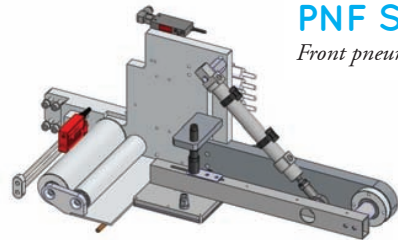
Pre-end of labels roll alarm
Photostop for transparent labels
Start photocell
Oscillating roller applicator

APPLICATOR MODULES



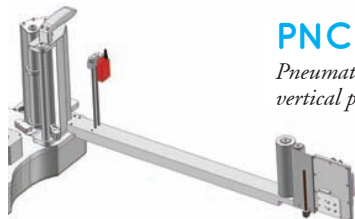
PNL SERIES

Side pneumatical applicator.



PNF SERIES

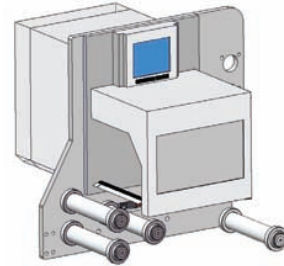
Front pneumatical applicator.



PNC SERIES

Pneumatical applicator for vertical packaging machinery.

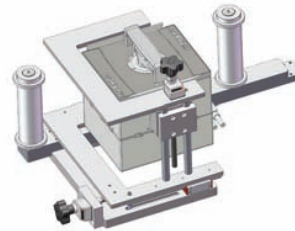
SUPPORT FOR PRINT UNIT



PE4 - PE6

Support for the integration of thermal transfer printing modules.

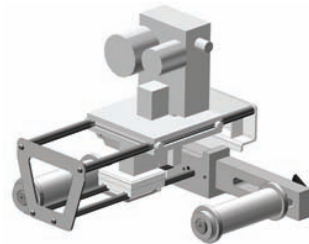
DATAMAX-SATO-ZEBRA-CABCARL VALENTIN



SM-LBX

Support for the integration of thermal transfer coders.

MARKEM-VIDEOJET-CARL VALENTIN-JAGUAR



SB-LBX

Support for the integration of hot-foil coders.

SUPPORT STRUCTURE



MXB

Support for top application with vertical and horizontal adjustment.



MXB-OV

Support for side application with vertical and horizontal adjustment.



MXB-OVS

Support for side application with vertical and horizontal adjustment and support for electric box ER-EW.